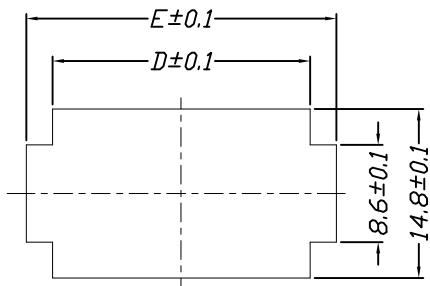
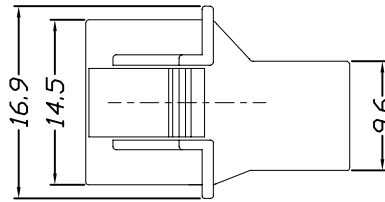
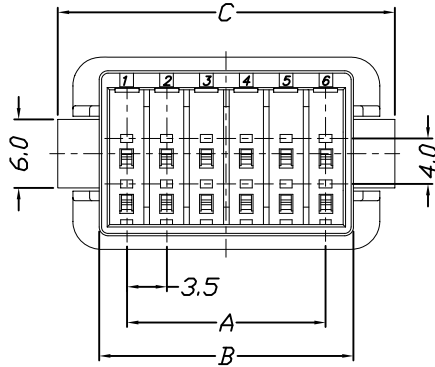
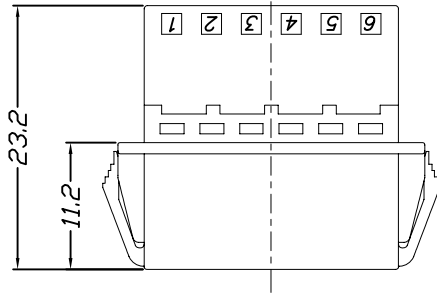
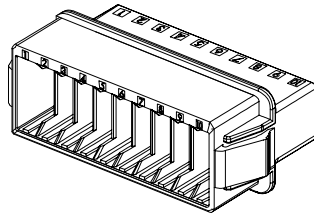


仅供参考

| | | |
|------|-----------------|------------|
| REV. | REVISION RECORD | DATE |
| A0 | 新图面发行 | 2017.06.16 |

Specifications:
 Voltage Rating : 250V AC/DC
 Current Rating : 4.6A AC,DC
 Withstand Voltage : 1500V AC/minute
 Contact Resistance : 40mΩ(MAX.)
 Insulation Resistance : 1000MΩ(MIN.)
 Temperature Range : -55°C~+105°C



Panel layout

| Poles | Dimensions | | | | |
|-------|------------|-------|-------|-------|-------|
| | A | B | C | D | E |
| 12P | 17.50 | 22.30 | 29.70 | 22.60 | 27.30 |
| 20P | 31.50 | 36.30 | 43.70 | 36.60 | 41.30 |

| | |
|-------------|-------|
| Material | Color |
| PBT UL94V-0 | BLACK |

| | | | | | | | |
|----------|--------------------|-----------|---------------|------|------------|--|-----------------------------------|
| | GENERAL TOLERANCES | | SCALE: 1:1 | NAME | DATE | 深圳市思拓展电子有限公司 SHENZHEN SINOTOP ELECTRONICS CO., LTD 公司地址: www.szstuo.cn 公司电话: 0755-23765350 邮 箱: 2850175982@qq.com 公司传真: 0755-23765341 | PART. NO: STP33502H00-2XNPX-PT |
| | LINEAR | ANGLES | APPROVED | | | | DWG. NO: |
| UNIT: MM | 0.00±0.25 | X° REF±6° | DESIGNER | | | TITLE: 3.50mm PITCH Housing | REV: A0 SHEET: 1/1 |
| SIZE: A4 | 0.000±0.15 | X° X'±2° | DRAWN | 肖坤权 | 2017.06.16 | | |