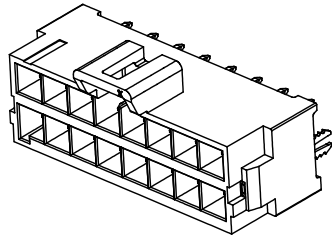


仅供参考

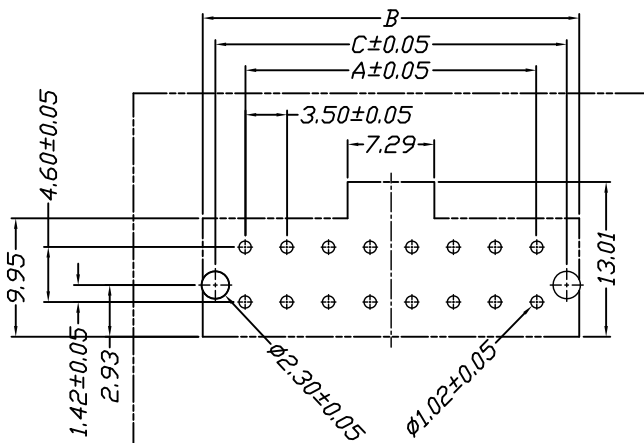
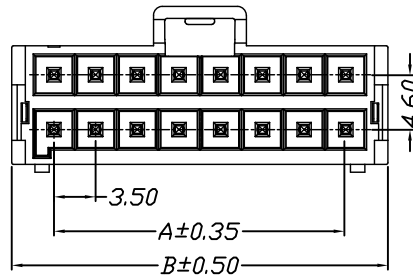
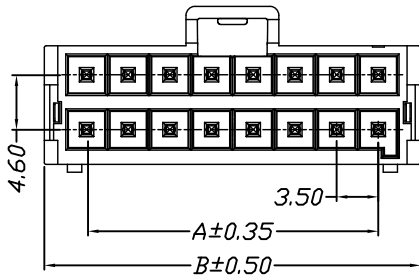
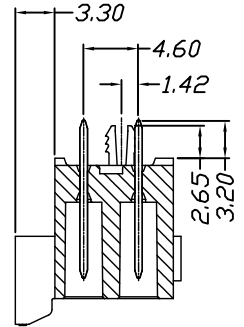
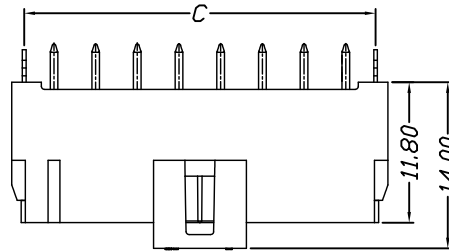
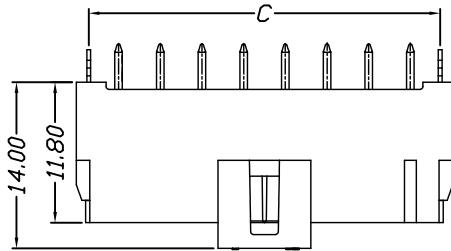
REV.	REVISION RECORD	DATE
A0	新图面发行	2017.06.16



Specifications:
 Voltage Rating : 250V AC/DC
 Current Rating : 7A AC,DC
 Withstand Voltage : 1500V AC/minute
 Contact Resistance : 40mΩ(MAX.)
 Insulation Resistance : 1000MΩ(MIN.)
 Temperature Range : -40°C~+120°C

STP43501W00-2XNP*-B2-**

STP43501W01-2XNP*-B2-**



P.C.B. LAYOUT

Poles	Dimensions		
	A	B	C
2*2P	3.50	10.60	8.50
2*3P	7.00	14.10	12.00
2*4P	10.50	17.60	15.50
2*5P	14.00	21.10	19.00
2*6P	17.50	24.60	22.50
2*7P	21.00	28.10	26.00
2*8P	24.50	31.60	29.50

Material	Color	PIN Material
LCP	Black	Brass/Tin-plated

	GENERAL TOLERANCES		SCALE: 1:1	NAME	DATE
	LINEAR	ANGLES			
	0.0±0.35	X° REF±6°	APPROVED		
UNIT: MM	0.00±0.25	X° ±3°	DESIGNER		
SIZE: A4	0.000±0.15	X° X'±2°	DRAWN	肖坤权	2017.06.16

深圳市思拓展电子有限公司
 SHENZHEN SINOTOP ELECTRONICS CO., LTD
 公司网址: www.szsituo.cn 公司电话: 0755-23765350
 邮箱: 2850175982@qq.com 公司传真: 0755-23765341

PART NO:	STP43501W0X-2XNPX-B2-XX	
DWG NO:		
REV:	A0	SHEET: 1/1

TITLE:
3.50mm Pitch 180° Dual Wafer DIP Type